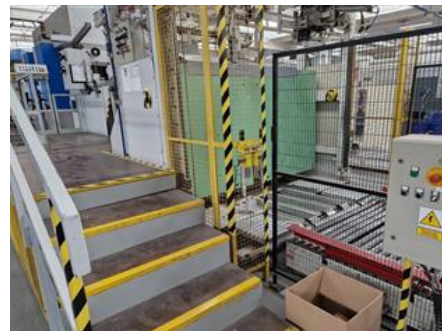


## Curriculum Vitae of the machine Reference number: 23530



## RODA FEEDER 065 Automatic Die Cutting Machine

### SPECIAL OFFER

**Production Year:** 1990  
**Max. Size/Width:** 1100x1650 mm  
(43.3"x65.0")

#### More Details:

**Availability:** immediately

**Sale Reason:** production reduction



**Condition of the Machine:** functional, condition and wear and tear according to its age, well maintained can be seen running

**Disclaimer:** The Condition of the Machine assessment presented in this CV was either obtained from the last machine operator or is based on an inspection performed by our employee, just to provide you with as much information as possible. For more certainty we recommend your own check or an assessment of an independent mechanic. We cannot provide you with any machine guarantee.